

Pediatric Patient Bathing Guidelines

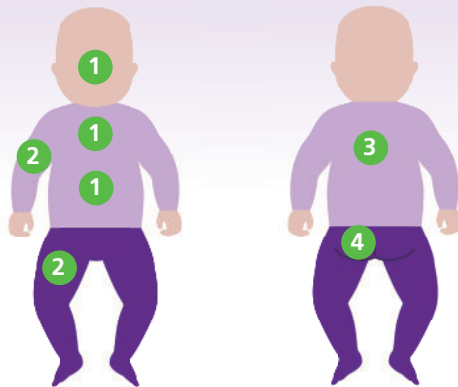


theraworxpro.com

Best Practices for Using Theraworx Protect Wipes

Theraworx Protect is safe for use on the skin including the most sensitive areas. It should be applied all over the body, including the face, groin, and genital area.

Smaller Patients



Cleanse with either side of the cloth. Allow to air dry.

Wipe 1: Face, neck, chest, then abdomen

Wipe 2: Arms, then legs

Wipe 3: Back

Wipe 4: Perineum, then buttocks

Larger Patients

Cleanse with either side of the cloth. Allow to air dry.

Wipe 1: Face, neck, chest, then abdomen

Wipe 2: Right arm, hand, and armpit

Wipe 3: Left arm, hand, and armpit

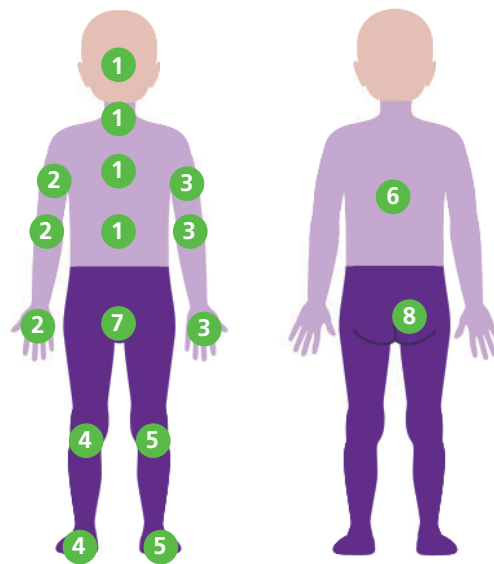
Wipe 4: Right leg and foot

Wipe 5: Left leg and foot

Wipe 6: Back

Wipe 7: Groin and genitals

Wipe 8: Buttocks and anus



Available in:

- SCP-8802FF 2-Pack Fragrance-Free Towels
- HX-8808FF 8-Pack Fragrance-Free Towels
- HX-8804FF 4-Pack Fragrance-Free Towels
- SCP-8802 2-Pack Towels
- HX-8808 8-Pack Towels
- HX-8804 4-Pack Towels